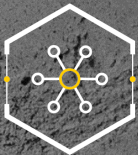
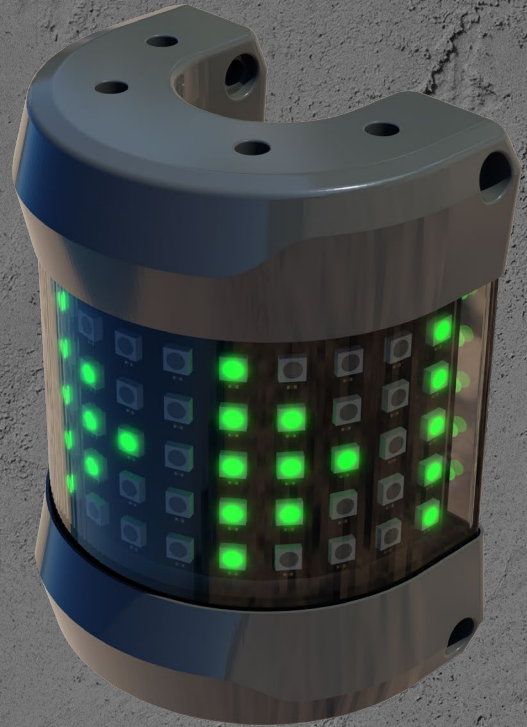


## RGB Signal Light

# CAN-LIGHT

The CAN-Light is an innovative signalling lamp that communicates the machine status acoustically and visually. Its almost 100 RGB LEDs can be individually controlled via the CAN protocol. The display can be customised with its own symbols for a wide range of applications.

- » **CANopen protocol**
- » Specially designed for **mobile applications** (8-32V)
- » **Compact design** and easy installation
- » **Flexible mounting & positioning:** terminals, wall mounting, ram mount, magnet
- » **Software** for creating customised logos, images and texts
- » **Baud rate and node ID freely adjustable**
- » Acoustic signals via buzzer
- » Very good **visibility at any time of day**
- » **Preconfigured functions** such as fill level display, status displays, traffic lights or warning notices



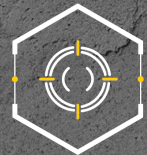
### MULTIFUNCTIONAL

Detailed information and versatile range of applications



### USER-FRIENDLY

Quick commissioning and easy programming



### UNIQUE

Combination of text, colour and acoustic signals