



DISPLAYS

CUSTOMIZABLE VISUALIZATION FOR MOBILE MACHINES

MOBA offers a wide range of displays for mobile machines – from compact 4.3” and 5” units for dedicated applications to our highly versatile Modular Display Platform. Based on robust 7” and 10” modules with a scalable hardware and software architecture, the platform gives OEMs and system integrators the freedom to tailor interfaces to any machine or application.

Whether for data display, machine control, or operator interaction – the modular platform provides the flexibility and expandability needed for individual requirements and future upgrades.



4.3" GRAPHIC DISPLAY



NEXT GENERATION DISPLAY TECHNOLOGY

This 4.3-inch operator-focused display is designed for intuitive use in mobile machinery environments. With its user-friendly interface and robust design, it significantly enhances the customer experience by simplifying interactions and improving operational efficiency.

- » 32bit microprocessor
- » 4.3" graphic display with backlight keys
- » I/O software configurable
- » Two CAN-BUS lines
- » 480x272 pixel – 900 cd/m²
- » IPS TFT-LCD with LED backlight

Options:

- » Analog video input

| Technical data | |
|-----------------------------|--------------------------------|
| Operating voltage | 8 ... 32 V DC |
| Current consumption | 100 to 500 mA @ 12V |
| Weight | 0.2 kg |
| Ingress protection | IP67 |
| Material | Plastic with silicon coating |
| Operating temperature range | - 40°C to + 75°C |
| Storage temperature range | - 40°C to + 80°C |
| Display type | IPS TFT-LCD with LED backlight |
| Display resolution | 480 x 272 pixel |
| Brightness | 900 cd/m ² (Typ) |
| Contrast ratio | 800:1 (Typ) |
| Display Colors | 16.7 M |
| Size (LxWxH) | 163 x 38 x 99.5 mm |
| Buzzer | 50 db |
| Video-Interface | 1x Analog video input PAL |
| USB port | 1x USB 2.0 |

| Name | Article number | Plugs | Inputs | Outputs | Interfaces |
|---------|----------------|-------------|--------------------------------------|-----------------------------|---|
| MVT-43V | 33-04-26-97210 | 10-pin plug | 4x Digital high side / Analog inputs | 4x Digital outputs (2A max) | CAN: 2x CAN-bus interfaces, ISO 11898-2 compliant |

5" MINI-OPERAND



RUGGED ON-BOARD ANDROID TERMINAL

The Mini-Operand is a powerful Android-based on-board computer built for vehicle integration, offering flexible use as a tablet or fixed terminal in mobile and demanding applications.

- » High-resolution display, sunlight-readable and suitable for in-vehicle use
- » Direct CAN bus connection via cradle or holder
- » Integrated RFID reader, radio modules, and telephony support
- » Rugged design for waste vehicles, navigation, or mobile control tasks

Technical data

| | |
|----------------------------------|---|
| Current consumption | 1.5 A max / 5 V USB 1.2 A max. / 12 V vehicle voltage 0.6 A max. / 24 V vehicle voltage |
| Battery | Li-Ion battery 3.6 V / 3.5 Ah |
| Weight: | 0.4 kg |
| Ingress protection | IP 54 |
| Operating temperature range | - 20 ... + 60°C |
| Storage temperature range | - 20 ... + 60°C |
| RAM | 2 GB LPDDR3 |
| Application processor | Octa ARM Cortex-A53 cores up to 1,8 GHz 64 bit processor |
| Display resolution | 854 x 480 pixel |
| Display size | 5" color TFT |
| Format | 16:9, up to 600 cd/m2 |
| Adjustable infinitely brightness | Yes |
| Ambient brightness sensor | Yes |
| Additional display elements | Multicolor LED |

| Name | Article number | Mounting method | Flash | Interfaces |
|--------------|----------------|--|--|--|
| Mini Operand | 04-55-0230 | Connection for RAM-mount, connection cable (5 m) | 16 GB eMMC 8 GB Micro SDHC card supports up to 128 GB | CAN: 2x USB: 2.0 Digital Input: High active threshold 8 V Wireless: 4G/LTE/GSM, BT 4.2 BLE, WiFi 2.4 GHz, 802.11/b/g/n Positioning: GNSS, WiFi SIM: Micro-SIM, 3FF (internal card socket); SIM chip |

7" HYBRID DISPLAY



NEXT GENERATION DISPLAY TECHNOLOGY

The GDH-070 combines a 7-inch touchscreen with physical keys for precise and reliable operation in challenging environments.

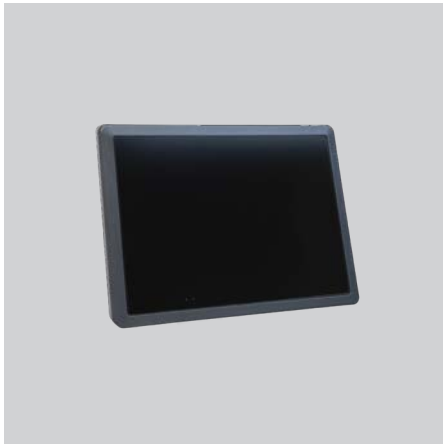
- » i.MX8 Quad Core Series, 4x 1,6 GHz
- » 2 GB LPDDR4 RAM (optional up to 8 GB)
- » 8 GB eMMC Flash (optional up to 64 GB)
- » Yocto 4 based custom Linux
- » QT 6
- » Customer specific design



| Technical data | |
|----------------------------------|---|
| Operating voltage | 24V, 12V (10-32V) DC |
| Weight | ~ 1.25 kg |
| Material | Plastic and Aluminium die casting |
| Ingress protection | IP65 |
| Operating temperature range | - 30°C to + 70°C |
| Storage temperature range | - 30°C to + 80°C |
| Colour display | TFT LCD transmissive |
| Display Size | 7 inch |
| Format | Wide, 16:10 |
| Display resolution | 800 x 480 pixel |
| Luminance | 1000 cd/m ² |
| Contrast ratio | Typical 1000:1 |
| Viewing angle | Typical 85/85/85/85, portrait & landscape |
| Touch | PCAP, 2 touchpoints simultaneously |
| Ambient brightness sensor | 1 sensor |
| Adjustable infinitely brightness | By software |
| Optical bonding | Yes |
| Anti-reflection | Yes |

| Name | Article number | Plugs | Interfaces |
|---------|----------------|-------------|--|
| GDH-070 | 04-25-40400 | 10-pin plug | CAN ISO 11898-2: 2x Bitrate 125 - 1000 kBit/s: Software configurable Node ID: 2x Address inputs, 3 states UART*: 2x RS232, no RTS/CTS Ethernet*: 1x 10/100/1000BASE-TX SPE: 1x 100BASE-T1, PoDL passive USB*: 1x USB 2.0 high speed, OTG ready Digital inputs*: 2x 0V/24V, positive switching Analogue camera inputs*: 4x PAL/NTSC, 1VPP, 75Ω Digital camera: Via SPE, H.264 / MJPEG Connectors must be added to access the interfaces marked with *. Please contact MOBA if required. We will find a solution. |

7" TOUCH DISPLAY



NEXT GENERATION DISPLAY TECHNOLOGY

The GDT-070 is a 7-inch touchscreen display designed for use in industrial and mobile environments with high durability demands.

- » i.MX8 Quad Core Series, 4x 1,6 GHz
- » 2 GB LPDDR4 RAM (optional up to 8 GB)
- » 8 GB eMMC Flash (optional up to 64 GB)
- » Yocto 4 based custom Linux
- » QT 6

Variants: Available as built-in or in-cab version (housing modifications required)



CODESYS

| Technical data | |
|----------------------------------|---|
| Operating voltage | 24V, 12V (10-32V) DC |
| Weight | ~ 1.25 kg |
| Material | Plastic and Aluminium die casting |
| Ingress protection | IP65 |
| Operating temperature range | - 30°C to + 70°C |
| Storage temperature range | - 30°C to + 80°C |
| Colour display | TFT LCD transmissive |
| Display Size | 7 inch |
| Format | Wide, 16:10 |
| Display resolution | 800 x 480 pixel |
| Luminance | 1000 cd/m ² |
| Contrast ratio | Typical 1000:1 |
| Viewing angle | Typical 85/85/85/85, portrait & landscape |
| Touch | PCAP, 2 touchpoints simultaneously |
| Ambient brightness sensor | 1 sensor |
| Adjustable infinitely brightness | By software |
| Optical bonding | Yes |
| Anti-reflection | Yes |

| Name | Article number | Plugs | Interfaces |
|---------|----------------|-------------|---|
| GDT-070 | 04-25-40300 | 10-pin plug | CAN ISO 11898-2: 2x Bitrate 125 - 1000 kBit/s: Software configurable Node ID: 2x Address inputs, 3 states UART*: 2x RS232, no RTS/CTS Ethernet*: 1x 10/100/1000BASE-TX SPE: 1x 100BASE-T1, PoDL passive USB*: 1x USB 2.0 high speed, OTG ready Digital inputs*: 2x 0V/24V, positive switching Analogue camera inputs*: 4x PAL/NTSC, 1VPP, 75Ω Digital camera: Via SPE, H.264 / MJPEG Connectors must be added to access the interfaces marked with *. Please contact MOBA if required. We will find a solution. |

10" TOUCH DISPLAY



NEXT GENERATION DISPLAY TECHNOLOGY

The GDT-100 is a 10-inch touchscreen unit offering a flexible interface and rugged construction for control and monitoring tasks.

- » i.MX8 Quad Core Series, 4x 1,6 GHz
- » 2 GB LPDDR4 RAM (optional up to 8 GB)
- » 8 GB eMMC Flash (optional up to 64 GB)
- » Yocto 4 based custom Linux
- » QT 6

Variants: Available as built-in or in-cab version (housing modifications required)



CODESYS

| Technical data | |
|----------------------------------|---|
| Operating voltage | 24V, 12V (10-32V) DC |
| Weight | ~ 1.9kg |
| Material | Plastic and Aluminium die casting |
| Ingress protection | IP65 |
| Operating temperature range | - 30°C to + 70°C |
| Storage temperature range | - 30°C to + 80°C |
| Colour display | TFT LCD transmissive |
| Display Size | 10 inch |
| Format | Wide, 16:10 |
| Display resolution | 1280 x 800 pixel |
| Luminance | 1000 cd/m ² |
| Contrast ratio | Typical 1000:1 |
| Viewing angle | Typical 85/85/85/85, portrait & landscape |
| Touch | PCAP, 2 touchpoints simultaneously |
| Ambient brightness sensor | 1 sensor |
| Adjustable infinitely brightness | By software |
| Optical bonding | Yes |
| Anti-reflection | Yes |

| Name | Article number | Plugs | Interfaces |
|---------|----------------|-------------|---|
| GDT-100 | 04-25-40200 | 10-pin plug | CAN ISO 11898-2: 2x Bitrate 125 - 1000 kBit/s: Software configurable Node ID: 2x Address inputs, 3 states UART*: 2x RS232, no RTS/CTS Ethernet*: 1x 10/100/1000BASE-TX SPE: 1x 100BASE-T1, PoDL passive USB*: 1x USB 2.0 high speed, OTG ready Digital inputs*: 2x 0V/24V, positive switching Analogue camera inputs*: 4x PAL/NTSC, 1VPP, 75Ω Digital camera: Via SPE, H.264 / MJPEG Connectors must be added to access the interfaces marked with *. Please contact MOBA if required. We will find a solution. |